



Hendry

3839 COMMERCIAL STREET

An East Vancouver Address

Downtown

Find the ideal balance of quiet living and city excitement. From the tranquil enclave of Hendry, downtown Vancouver is a mere 20-minute, 5.8 km bike ride along the scenic Central Valley Greenway or a short drive away.

Kingsway x Knight

Around the corner, Kingsway and Knight intersect, a gateway to East Vancouver's renowned cultural vibrancy. Offering a rich tapestry of dining options, shopping, and access to the city's main arteries, you're close to an abundance of urban convenience and diversity.

Broadway

This essential east-west artery is easily accessible from Hendry, with quick, crosstown bus connections for the #99 and to Commercial-Broadway SkyTrain Station. Nearby, the Central Valley Greenway provides an easy east-west bike route, making travel and commuting safe and efficient.

Commercial Street

Hendry is nestled within storied Commercial Street, historically a hub of enterprise and entertainment and now a tranquil tree-lined avenue, with charming eateries, shops, and galleries. Hendry stands as a hidden gem in this creative neighbourhood, inviting you to a life woven with connection, discovery, and a sense of belonging.

Commercial Drive

Affectionately known as 'The Drive', and spanning 22 blocks with over 300 unique merchants, eclectic Commercial Drive buzzes with life day or night. Explore everything from boutiques and vintage shops to renowned restaurants, live music venues, theatres, and independent coffee houses.

Trout Lake Park

Trout Lake Park serves as the epicentre of the neighbourhood, with year-round activities and amenities. Covering 67 acres, the park boasts winding nature trails, a serene lake, and the Farmers' Market, a cornerstone of community life. The Trout Lake Community Centre offers a plethora of services including an ice rink, fitness centre, preschool, café, and art studios.

Nanaimo Street

A hub of character and a tree-lined artery of East Van's Grandview-Woodland, Nanaimo Street is a lively mix of shops, eateries, and parks, epitomizing a spirit of togetherness. Just a short walk to Nanaimo SkyTrain, Hendry provides convenient transit options for wherever the day takes you.



NOWHERE COMPARES TO COMMERCIAL STREET. THIS TWO-BLOCK STRIP JUST OFF THE SOUTHERN SIDE OF THE DRIVE IS QUIET AND NOURISHING, CREATIVE AND REAL. IT'S ALIVE WITH LOCAL BUSINESSES, EATERIES, GALLERIES, AND ARTISTIC MAKERS — ALL AT YOUR FRONT DOOR. FOLD YOUR STORY INTO A GENUINE VANCOUVER COMMUNITY WITH SOUL.

1

The "Street"

Commercial Street was once one of Vancouver's major strips — a bustling business and entertainment district and tram hub. This rich history is part of what makes the street special today. That and the local entrepreneurs who are still drawn to create and grow here.



2 Trout Lake

Officially named John Hendry Park, Trout Lake Park anchors the neighbourhood in greenery. People gather on the lawns for picnics, jog around the lake, and browse the farmers' market. It's a scene in the summer and a tranquil piece of nature to enjoy year-round.



The Drive

Commercial Drive is colourful with restaurants, boutiques, food markets, bookstores, and live music. It's known for its multi-cultural vibe, including a large Italian community. From pasta to tacos to dumplings to everything in between, you can taste the world here.

3



4

Transit

A couple of SkyTrain stations are within walking distance from home, and a number of bus routes move along Commercial Drive, Victoria Drive, Kingsway, and Broadway. It's easy to step out from your quiet Vancouver nook to commute or explore.



DESIGNED WITH AN INSIGHTFUL EYE,
EVERY DETAIL IS A CONVERSATION STARTER.
YOUR HOME IS NOT JUST A RESIDENCE BUT
A STATEMENT.



The entryway ushers you into a refreshing breezeway, a contrast of polished refinement, architectural intricacy and modern grit in surprising balance. Next, sunlight streams into the open courtyard, giving life to a lush promenade — a touch of the organic within the urbane. The artistic geometry continues inside and up, stretching into the over-height ceiling and inviting you into the lobby where relaxing minimalism welcomes you home.

3 Distinct Home Types

Hendry introduces three living styles. Choose from spacious Three Bedroom Townhomes, traditional City Homes, or Loft Homes which offer a bold, industrial edge with their over-height, exposed concrete ceilings. Each Hendry home radiates its own singular flair, a reflection of the unique stories woven through its historic neighbourhood.



1 TOWNHOMES

An intimate collection of five townhomes that foster friendly neighbour catch-ups and easy playdates next door. Stretch out with three-bedroom + flex, 2.5 bathroom configurations across wide, two storey levels. Family-forward homes, these East Van rarities offer optimal functionality and ease, encouraging calm amongst the busyness of daily routines. Outside, each townhome's expansive private terrace beckons relaxation while the Juliet balcony allows a birds-eye-view of your neighbourhood.



2 CITY HOMES

Hendry's twelve City Homes encapsulate the essence of energetic urban living. With versatile one- to two-bedroom layouts, City Homes combine city utility with maximum value. Single-level homes speak to those who favour efficient living at home, yet revel in the varied vibrancy of East Vancouver. Front entries branching from the courtyard provide a sheltering welcome, uncommon in a city home.



3 LOFT HOMES

Much sought-after in urban living spaces, Hendry's six Loft Homes boast over-height ceilings and exposed concrete, exuding an airy feel within a contemporary framework. Junior one- or two-bedroom + flex plans present a canvas for elevated urban living with a touch of raw, architectural drama.

Classic Design for Tranquil Living



Crafted by Portico Design, interiors marry Scandinavian simplicity with classic Italian sophistication. Space planning for real life ensures a functional flow between kitchen, living, and dining areas across all floorplans. Expansive windows flood spaces with natural light, creating a soothing home environment to recharge and enjoy quality time with loved ones.



Pull the door closed behind you and exhale. Comfortable and spacious bedrooms are designed as tranquil sanctuaries, while ample storage solutions and harmonious design elements encourage clutter-free, calm living.



An elevated bathroom does wonders. Slip off the day's stress in minimalist elegance married with practicality. Surfaces of quartz and porcelain, glass and chrome create a refined backdrop for your morning and evening routines.

A HOME ALL YOUR OWN. WHERE MODERN,
AIRY DESIGN MEETS A MINIMALISTIC AESTHETIC,
OFFERING A CANVAS FOR YOUR STORIES
TO UNFOLD. FROM SUN-KISSED WALLS ON
CONTEMPLATIVE SUNDAY MORNINGS TO LIVELY
AT-HOME CELEBRATIONS TO MARK THE
MILESTONES, YOUR HENDRY HOME IS WHERE
MEMORIES BEGIN.

At the heart of the home, your kitchen. Hendry
kitchens set style and practicality at the forefront.
European-inspired cabinetry, quartz countertops and
porcelain backsplashes complement Fulgor Milano
appliances to heighten your culinary endeavours
and create a pleasing backdrop for gathering
and conversation.



A Balance of Utility and Beauty

The residential upper floor showcases generous windows framed in geometric precision, providing a sense of openness. Ample natural light and views of the quiet street below create connectivity with the outside. Adaptable living areas offer the flexibility to transform your home as your lifestyle evolves, while thoughtful storage solutions cater to everyday utility. Every detail is crafted with an eye to tranquil living.



Balconies

West-facing balconies enrich your home life by providing a peaceful setting for morning coffees and sunset views. Live in harmony with your neighbourhood's natural backdrop and enjoy outdoor living in every season.

Appliances

Fulgor Milano* European appliances enhance the joy of cooking with elegance and state-of-the-art functionality. (*market homes)

Millwork

Timeless European-inspired, flat-panel cabinetry conceals practical storage solutions, with spacious full-height pantries featured in most homes. Soft-close technology adds to the elevated kitchen experience.

Bathrooms

Quartz countertops and floor accent lighting add a touch of luxe, while glass shower and bathtub doors, undermount sinks and large-format porcelain tiles create a seamless tableau that soothes the senses. Primary bathrooms offer rainhead and hand-held shower wand pairings, while secondary bathrooms boast soaker tubs for ultimate serenity.

Flex Rooms

Offered in most homes, a versatile in-home flex room provides convenient access to your extra belongings or designated space for a work-from-home office.

Terraces

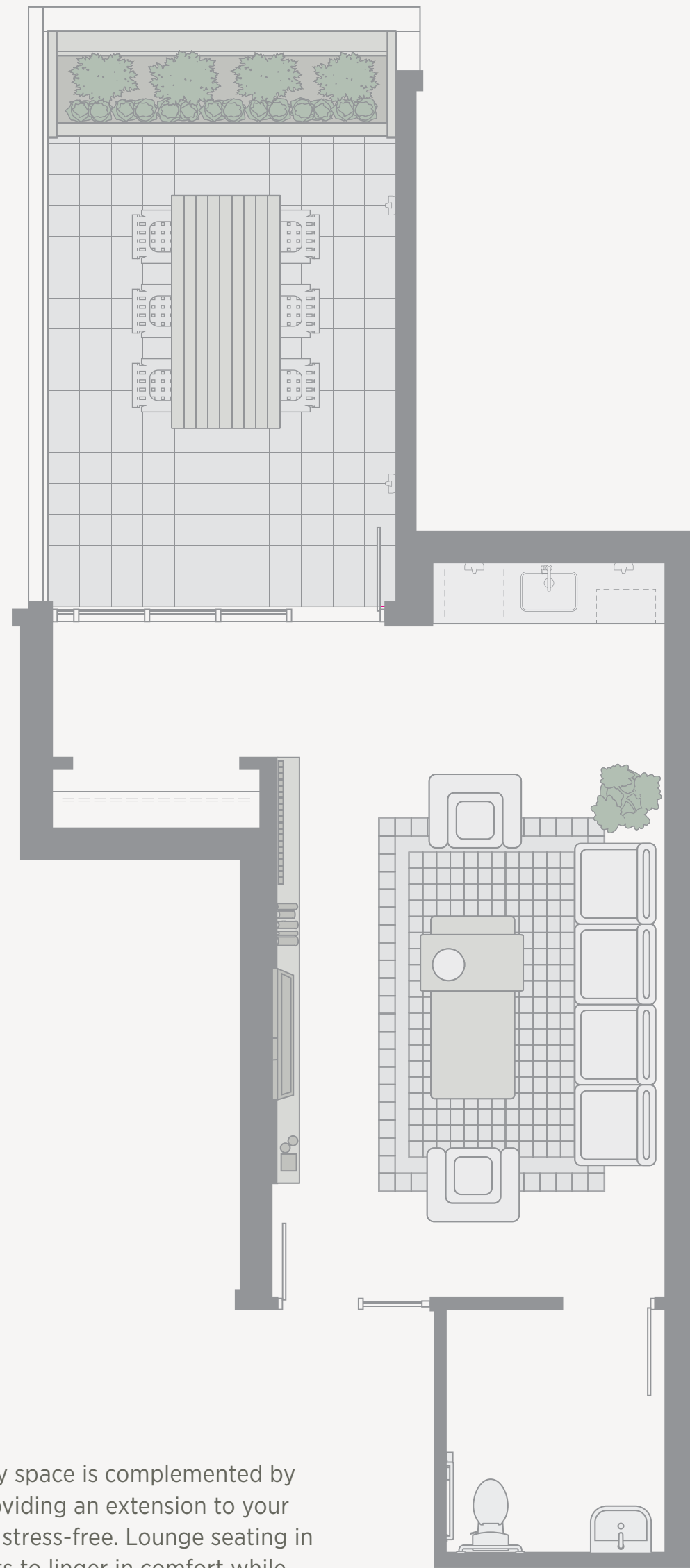
Third-level courtyard homes open up to private terraces that extend your living outdoors. Fourth-level homes offer a private entry overlooking the courtyard and views beyond.

DISCOVER SEAMLESS INDOOR-OUTDOOR LIVING,
WHERE COURTYARD TERRACES HOST LIVELY
DINNERS AND BALCONIES WELCOME SLOW
MORNINGS WITH COFFEE IN HAND. EACH OUTDOOR
EXTENSION IS AN OPPORTUNITY TO SAVOUR THE
BEAUTY OF OUTDOOR LIVING.

Private terraces offer an urban, open-air escape, with entry approaches providing a glimpse of the tranquil courtyard and views beyond. Unwind outdoors on your west-facing balcony, perfect for lazy brunches and sunset views.

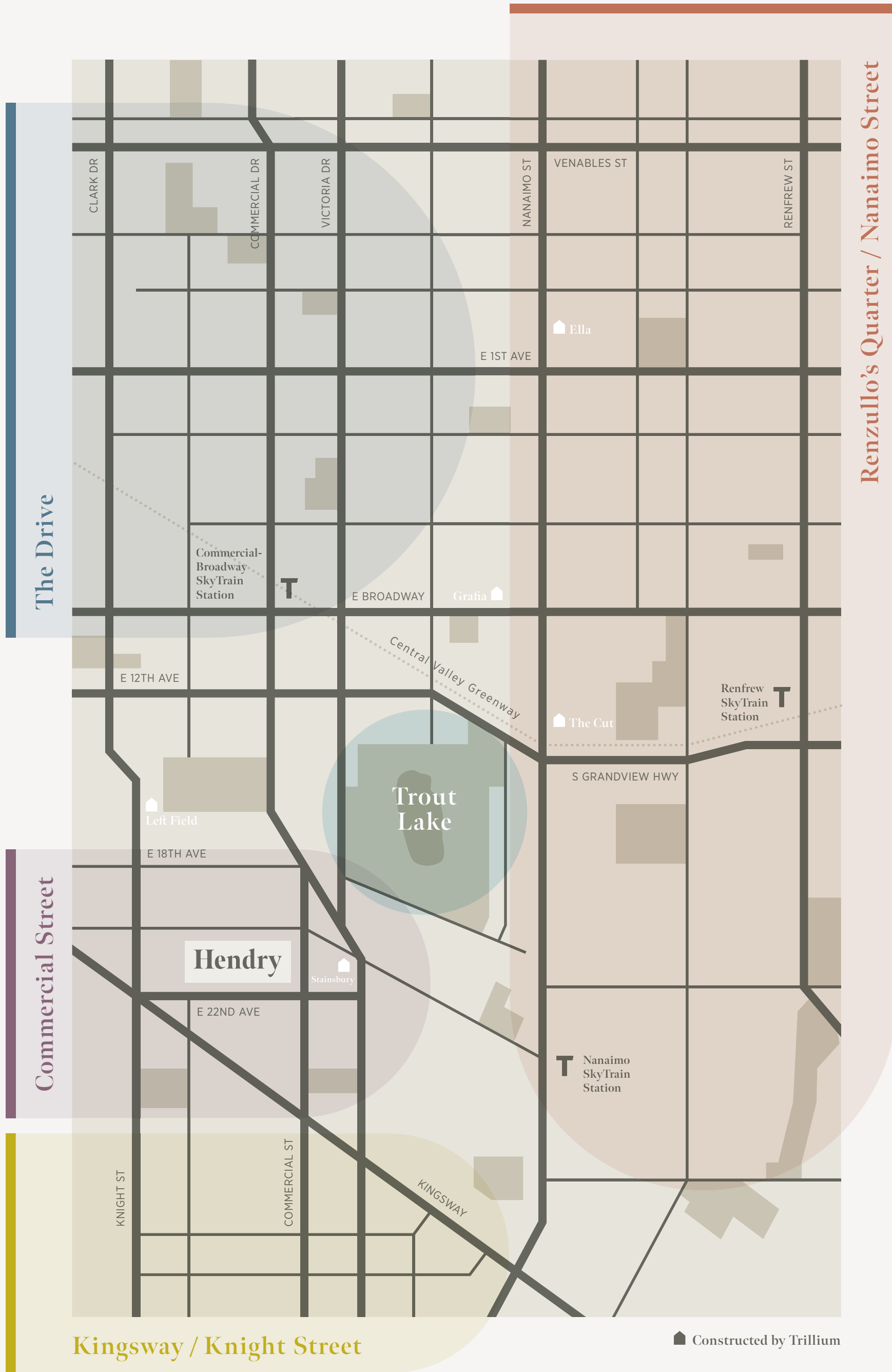


Amenities



The versatile indoor amenity space is complemented by its own outdoor terrace, providing an extension to your home for larger gatherings, stress-free. Lounge seating in the great room allows guests to linger in comfort while the dedicated bathroom and well-equipped kitchenette — complete with counter space, sink, microwave, and dishwasher — offers convenient hosting.

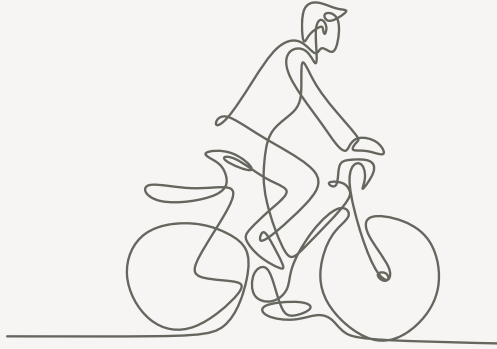




Hot Spots

COMMERCIAL STREET

- Equinox Gallery
- Flourist Bakery
- Kokomo
- Collective Goods Bistro & Grocer
- Luminous Elephant Art School
- Chance Cafe
- Esthette Lifestyle Shop
- Sidesaddle Bike Shop
- Lord Selkirk Elementary School (K - 7)
- Gladstone Secondary School (8 - 12)
- Brewers Park

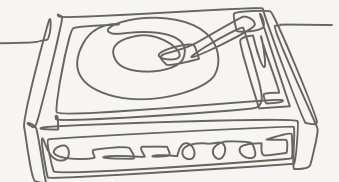


TROUT LAKE

- Trout Lake Preschool (3 - 4yo)
- John Hendry Park (Trout Lake Park)
- Trout Lake Farmers Market
- Trout Lake Rink
- Trout Lake Community Centre (Fitness Centre, Yoga, Cafe, Programs, Community Events)

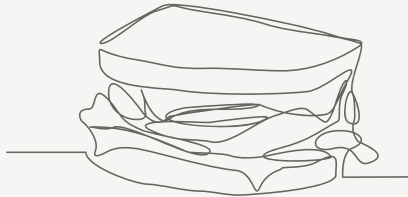
THE DRIVE

- Commercial-Broadway SkyTrain Station
- Central Valley Greenway
- City Avenue Market
- Grandview Lanes
- Rio Theatre
- Merci Boulangerie
- Prado Cafe
- Elephant Garden Creamery
- La Grotta Del Formaggio
- LIVIA Forno e Vino
- Pepino's Spaghetti House
- Caffé La Tana
- La Mezcaleria
- Downlow Chicken Shack
- East Van Brewing Company
- Havana Vancouver
- The Flamingo Room
- Sopra Sotto Pizzeria
- Loula's Taverna + Bar
- Kin Kao
- Lunch Lady
- Dolce Amore
- Fratelli Bakery
- Social



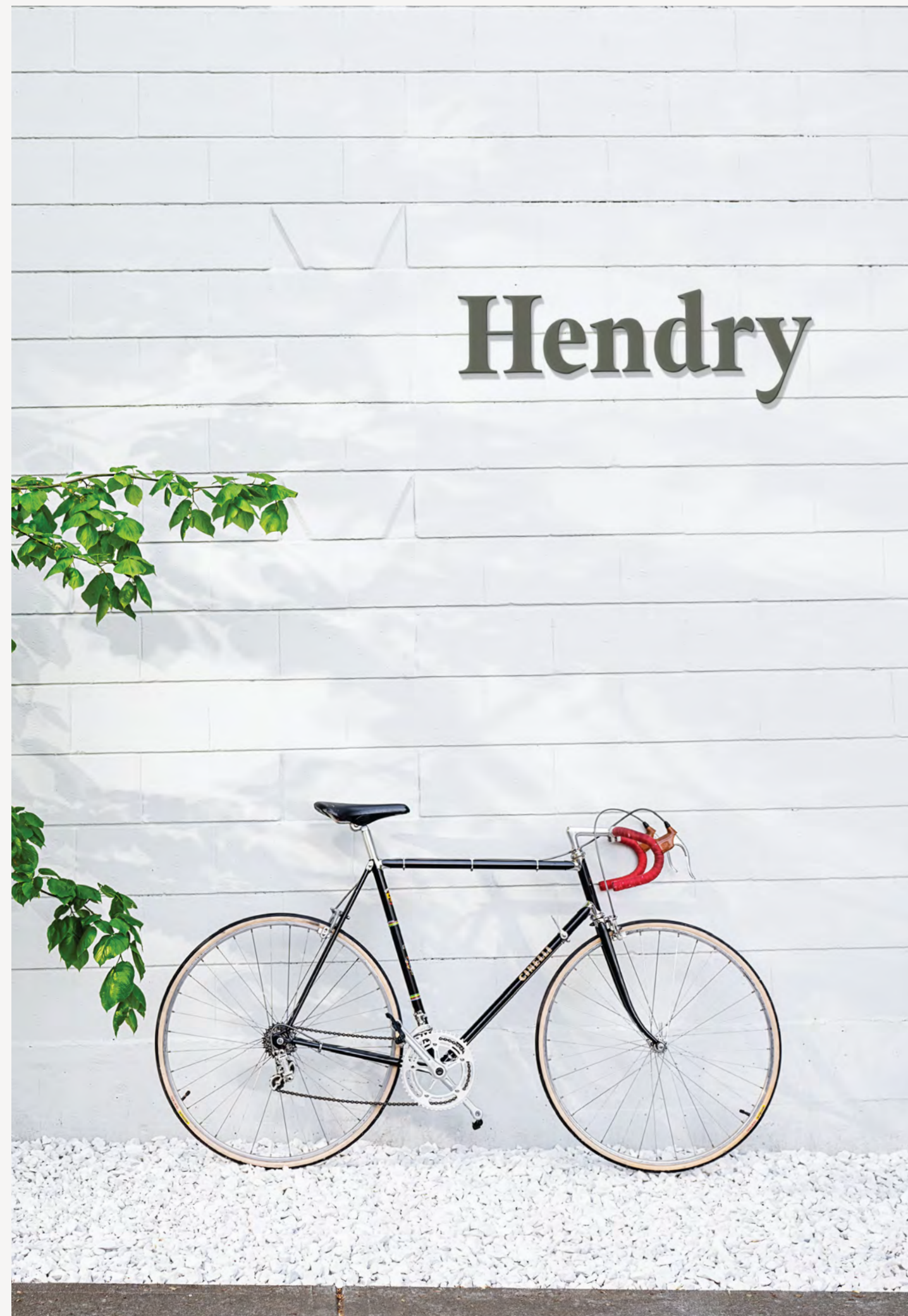
RENZULLO'S QUARTER / NANAIMO STREET

- Columbus Meat Market
- Renzullo Food Market
- To Live For Bakery & Cafe
- Templeton Park Pool
- The Cultch Theatre
- Figaro's Garden
- Via Tevere Pizzeria
- Bosa Foods
- Clinton Park
- Nanaimo SkyTrain Station



KINGSWAY / KNIGHT STREET

- Pallet Coffee Roasters
- Save-On-Foods
- Jackson's General
- Vancouver Public Library
- Anytime Fitness
- House of Dosas
- Pink Peppercorn
- Green Lettuce
- Lily's Florist
- Do Chay
- Famous Foods
- Little Cedar Montessori Pre School (3 - 7)
- Lord Selkirk Annex (K - 4)
- Dollar Tree
- Kingcrest Park



AT HOME AT HENDRY



COLLECTIVE GOODS BISTRO



FLOURIST BAKERY

Spirited Street Life

Commercial Street has a spirited yet grounded vibe, attracting makers, doers, and artists. Stroll along and discover friendly artisanal shops and services. From local, stone-milled flour at Flourist to aromatic coffees at Commercial Street Cafe to flavourful meals at Collective Goods, you'll quickly find your favourite East Van gems just steps away.

IT'S EAST VAN'S BEST-KEPT SECRET, WHERE THE PAST MEETS THE PRESENT, WHERE NEIGHBOURS BECOME FRIENDS, WHERE EVERY STOREFRONT, MURAL, AND CONVERSATION TELLS A STORY.

Transit and Connections

Tucked away in the historic Kensington-Cedar Cottage neighbourhood of East Vancouver, Hendry infuses your daily living with both ease and vitality. With a Walk Score of 92, Hendry is a walker's paradise, where every errand becomes a memorable neighbourhood stroll.



For walkers, Hendry's location positions you in a neighbourhood brimming with amenities. Leave the car behind and explore this vibrant neighbourhood on foot.

7 MINS (550M)
Walk to Trout Lake

Nearby Trout Lake invites residents to pause. Morning jogs around the lake, gathering with friends and family for sunny afternoon picnics, or well-deserved midday naps stretched out on a blanket in the grass.



76
TRANSIT
SCORE

Begin your day with an unhurried walk to nearby Nanaimo Station that sets the tone for a hassle-free commute. Venturing out for work or play is never a challenge but an easy part of your routine you don't have to think twice about.

1.0 KM
Nanaimo Station (Expo Line)

1.2 KM
Commercial-Broadway Station (Millennium Line)

1.5 KM
Central Valley Greenway

Spanning 26 kms, the Central Valley Greenway is only a few minutes away. This pathway follows the SkyTrain's Expo Line, a scenic route for cyclists, pedestrians and joggers, connecting downtown Vancouver to New Westminster and passing picturesque Burnaby Lake and Deer Lake.

5.8 KM
Downtown Vancouver

A 22 min, 5.8km bike ride to Downtown along dedicated bike paths of the Central Valley Greenway.

91
BIKE
SCORE



DRIVE

For car commuters, 3893 Commercial Street is central, with arterial roads radiating out to all destinations in the surrounding area.

14 MIN (5.6 KM)
Drive Downtown

20 MIN (11.6 KM)
Drive to YVR Airport

15 MIN (5.9 KM)
Drive to Metrotown



Level 1



Level 2

Plan C1 Unit 256

2 BEDROOM + FLEX
2 BATHROOM

INTERIOR 846 SF
EXTERIOR 111 SF
TOTAL 957 SF

Plan B1 Unit 255

2 BEDROOM
1 BATHROOM

INTERIOR 696 SF
EXTERIOR 52 SF
TOTAL 748 SF

Plan A4 Unit 254

1 BEDROOM + FLEX
1 BATHROOM

INTERIOR 521 SF
EXTERIOR 52 SF
TOTAL 573 SF

Plan A2 Unit 253

1 BEDROOM + FLEX
1 BATHROOM

INTERIOR 466 SF
EXTERIOR 52 SF
TOTAL 518 SF

Plan A2 Unit 252

1 BEDROOM + FLEX
1 BATHROOM

INTERIOR 467 SF
EXTERIOR 52 SF
TOTAL 519 SF

Plan A1 Unit 251

1 BEDROOM + FLEX
1 BATHROOM

INTERIOR 507 SF
TOTAL 507 SF



Level 3

Plan C1 Unit 311

2 BEDROOM + FLEX
2 BATHROOM

INTERIOR 863 SF
EXTERIOR 51 SF
TOTAL 914 SF

Plan C2 Unit 310

2 BEDROOM + FLEX
2 BATHROOM

INTERIOR 841 SF
EXTERIOR 130 SF
TOTAL 971 SF

Plan B2 Unit 309

1 BEDROOM + FLEX
1 BATHROOM

INTERIOR 530 SF
EXTERIOR 125 SF
TOTAL 655 SF

Plan B2 Unit 308

1 BEDROOM + FLEX
1 BATHROOM

INTERIOR 530 SF
EXTERIOR 125 SF
TOTAL 655 SF

Plan B2 Unit 307

1 BEDROOM + FLEX
1 BATHROOM

INTERIOR 530 SF
EXTERIOR 125 SF
TOTAL 655 SF

Plan A3 Unit 306

1 BEDROOM
1 BATHROOM

INTERIOR 496 SF
TOTAL 496 SF



Plan THA Unit 301

3 BEDROOM + FLEX
3 BATHROOM

INTERIOR 1,186 SF
EXTERIOR 83 SF
TOTAL 1,269 SF

Plan THB Unit 302

3 BEDROOM + FLEX
3 BATHROOM

INTERIOR 1,135 SF
EXTERIOR 141 SF
TOTAL 1,276 SF

Plan THB Unit 303

3 BEDROOM + FLEX
3 BATHROOM

INTERIOR 1,135 SF
EXTERIOR 141 SF
TOTAL 1,276 SF

Plan THB Unit 304

3 BEDROOM + FLEX
3 BATHROOM

INTERIOR 1,135 SF
EXTERIOR 141 SF
TOTAL 1,276 SF

Plan THB Unit 305

3 BEDROOM + FLEX
3 BATHROOM

INTERIOR 1,175 SF
EXTERIOR 113 SF
TOTAL 1,288 SF

Level 4

Plan C1 Unit 406

2 BEDROOM + FLEX
2 BATHROOM

INTERIOR 863 SF
EXTERIOR 51 SF
TOTAL 914 SF

Plan C2 Unit 405

2 BEDROOM + FLEX
2 BATHROOM

INTERIOR 841 SF
EXTERIOR 51 SF
TOTAL 892 SF

Plan B2 Unit 404

1 BEDROOM + FLEX
1 BATHROOM

INTERIOR 530 SF
EXTERIOR 51 SF
TOTAL 581 SF

Plan B2 Unit 403

1 BEDROOM + FLEX
1 BATHROOM

INTERIOR 530 SF
EXTERIOR 51 SF
TOTAL 581 SF

Plan B2 Unit 402

1 BEDROOM + FLEX
1 BATHROOM

INTERIOR 530 SF
EXTERIOR 51 SF
TOTAL 581 SF

Plan A3 Unit 401

1 BEDROOM
1 BATHROOM

INTERIOR 496 SF
TOTAL 496 SF



Plan THA

3 BEDROOM + FLEX
3 BATHROOM

INTERIOR 1,186 SF
EXTERIOR 83 SF
TOTAL 1,269 SF

Plan THB

3 BEDROOM + FLEX
3 BATHROOM

INTERIOR 1,135 SF
EXTERIOR 141 SF
TOTAL 1,276 SF

Plan THB

3 BEDROOM + FLEX
3 BATHROOM

INTERIOR 1,135 SF
EXTERIOR 141 SF
TOTAL 1,276 SF

Plan THB

3 BEDROOM + FLEX
3 BATHROOM

INTERIOR 1,135 SF
EXTERIOR 141 SF
TOTAL 1,276 SF

Plan THB

3 BEDROOM + FLEX
3 BATHROOM

INTERIOR 1,175 SF
EXTERIOR 113 SF
TOTAL 1,288 SF

OPEN TO COURTYARD BELOW

COMMERCIAL STREET



1



LOFT COLLECTION

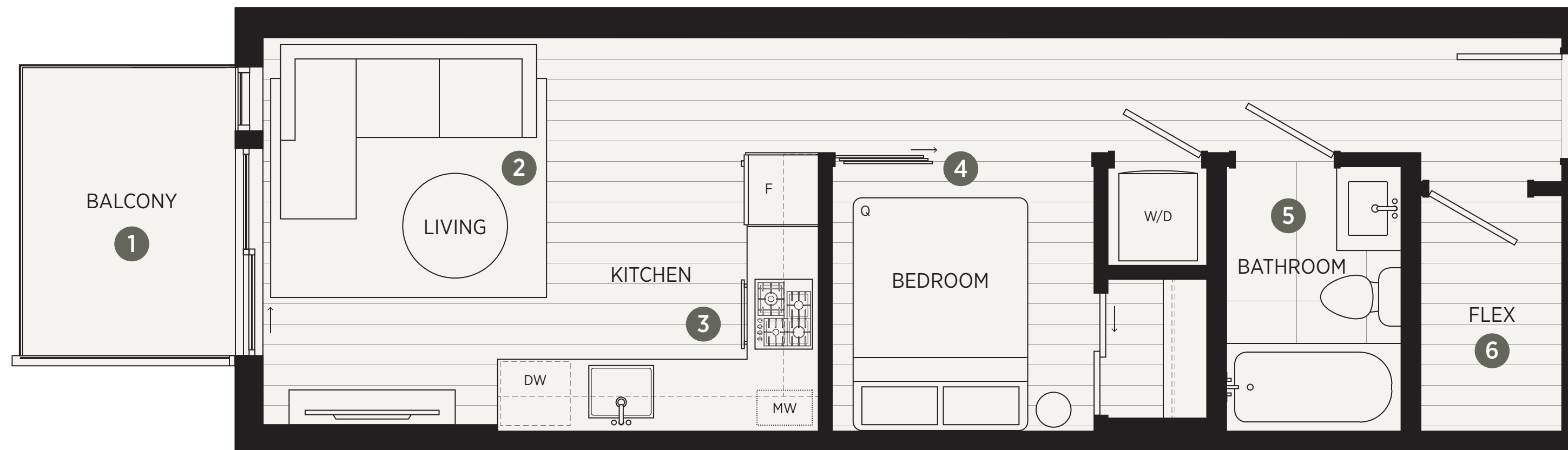


Plan A2

LOFT COLLECTION

1 BEDROOM + FLEX
1 BATHROOM

INTERIOR 466 - 467 SF
EXTERIOR 52 SF
TOTAL 518 - 519 SF



1 The balcony extends the living space outdoors, offering fresh air and quiet west-facing community views.

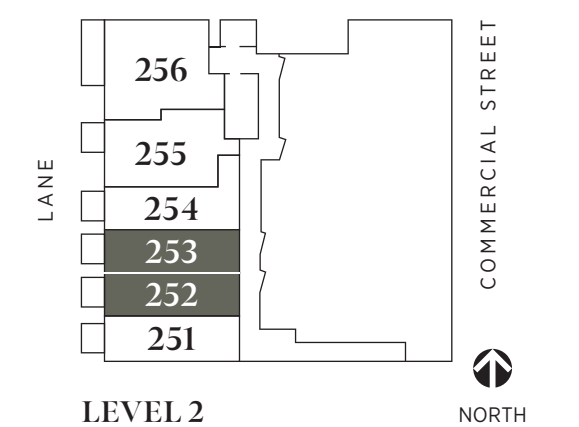
2 An over-height ceiling with exposed concrete detailing adds airiness to the primary living area.

3 European Fulgor Milano appliances offer sleek kitchen aesthetics and culinary functionality.

4 Frosted glass sliders invite a perfect balance of privacy and natural light to the bedroom.

5 Spacious full-sized bathroom features soft-close cabinetry, under-cabinet lighting, medicine cabinets, and quartz countertops for both practicality and luxury.

6 Versatile flex room maximizes functionality as a home office, creative studio, or extra storage.



Plan A4

LOFT COLLECTION

1 BEDROOM + FLEX
1 BATHROOM

INTERIOR	521 SF
EXTERIOR	52 SF
TOTAL	573 SF



1 The balcony extends the living space outdoors, offering fresh air and quiet west-facing community views.

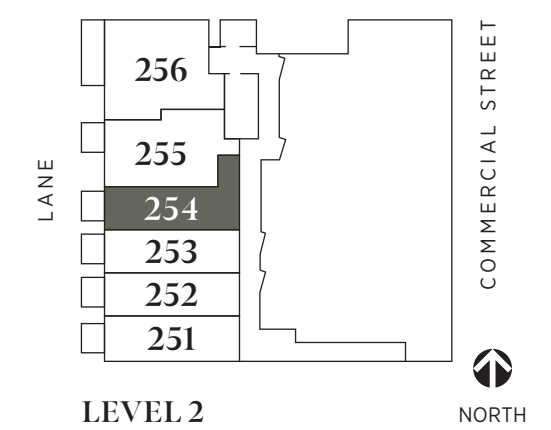
2 An over-height ceiling with exposed concrete detailing adds airiness to the primary living area.

3 European Fulgor Milano appliances offer sleek kitchen aesthetics and culinary functionality.

4 Frosted glass sliders invite a perfect balance of privacy and natural light into the bedroom.

5 Versatile flex room maximizes functionality as a home office, creative studio, or extra storage.

6 Spacious full-sized bathroom features soft-close cabinetry, under-cabinet lighting, medicine cabinet, and quartz countertops for both practicality and luxury.



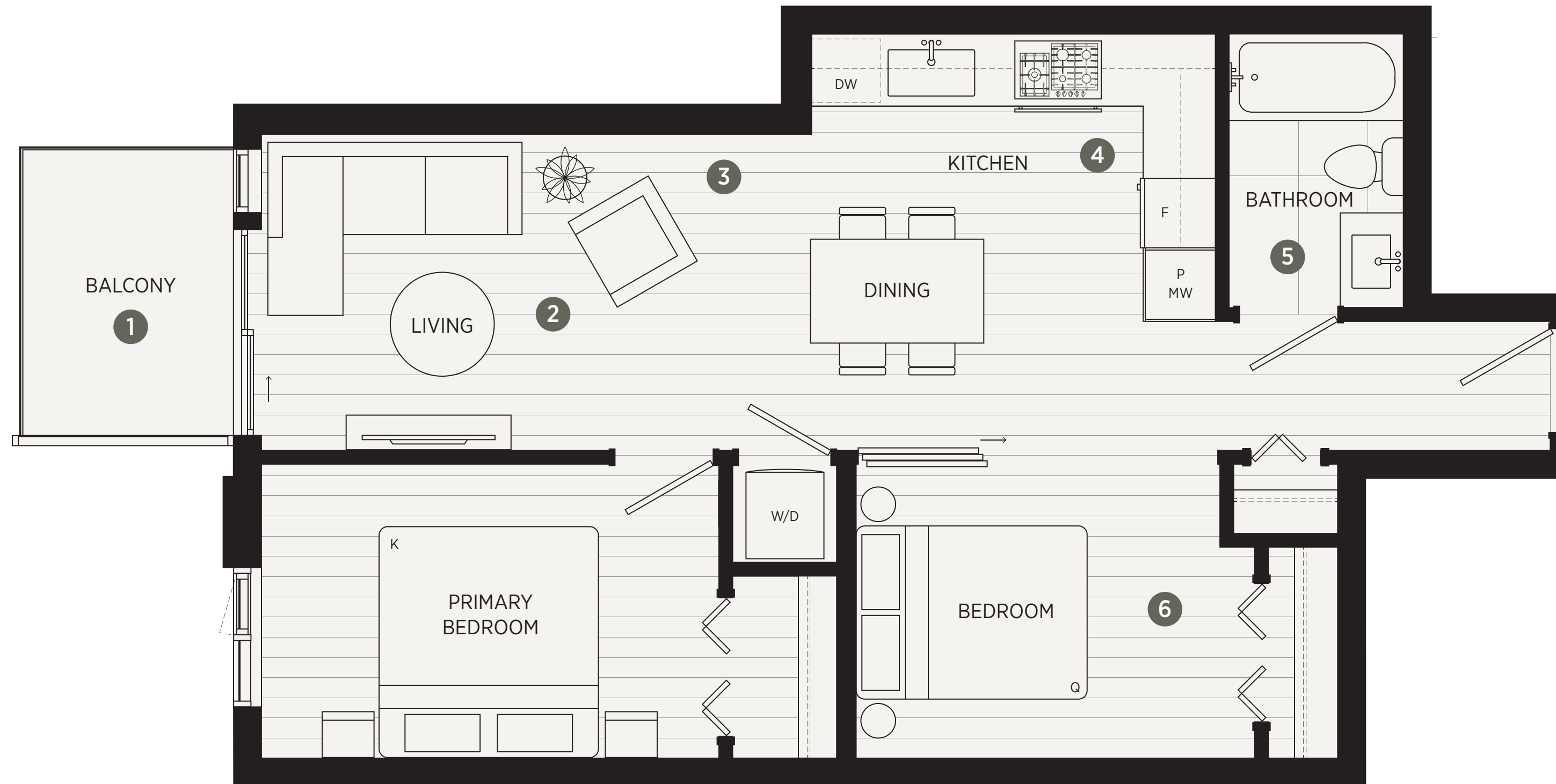


Plan B1

LOFT COLLECTION

2 BEDROOM
1 BATHROOM

INTERIOR	696 SF
EXTERIOR	52 SF
TOTAL	748 SF



1 The balcony extends the living space outdoors, offering fresh air and quiet west-facing community views.

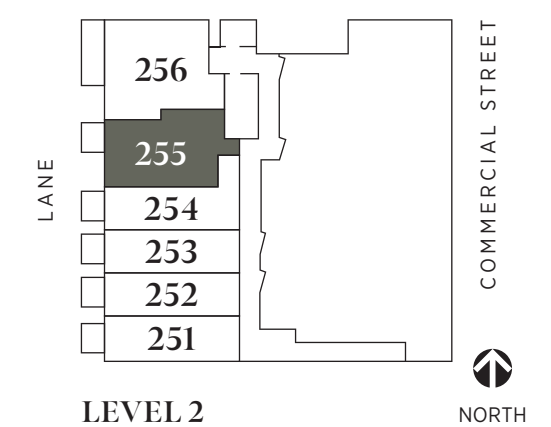
2 The open-concept living area encourages a seamless flow between living, dining and kitchen areas.

3 An over-height ceiling with exposed concrete detailing adds airiness to the primary living area.

4 European Fulgor Milano appliances offer sleek kitchen aesthetics and culinary functionality.

5 Spacious full-sized bathroom features soft-close cabinetry, under-cabinet lighting, medicine cabinet and quartz countertops for both practicality and luxury.

6 Two spacious bedrooms designed in an efficient layout, with the second bedroom featuring glass sliders – a perfect blend of privacy and natural light.



Plan C1 (L2)

LOFT COLLECTION

2 BEDROOM + FLEX
2 BATHROOM

INTERIOR	846 SF
EXTERIOR	111 SF
TOTAL	957 SF



1 The spacious patio exclusive to this home, is a rare urban luxury, ready for entertaining, gardening, or sky-gazing.

2 This cleverly-designed hidden nook accommodates a desk, dresser, or other vertical storage solutions.

3 The walk-through closet features a double set of doors for added privacy, and also doubles as a private dressing area.

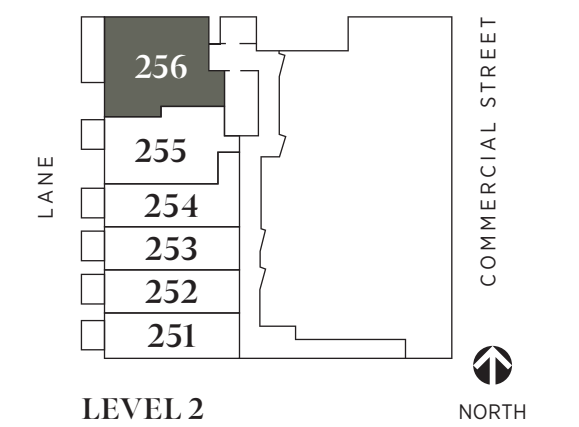
4 The generously-sized primary bedroom offers ample storage and convenient ensuite bath access which features, quartz countertops and backsplash, soft-close cabinetry, medicine cabinet, and under-cabinet lighting.

5 European Fulgor Milano appliances offer sleek kitchen aesthetics and culinary functionality.

6 Full-sized, side-by-side Whirlpool washer and dryer adds everyday ease at home.

7 Versatile flex room maximizes functionality as a home office, creative studio, or extra storage.

8 An over-height ceiling with exposed concrete detailing adds airiness to the primary living areas.



2



CITY HOME COLLECTION

Plan A3

CITY HOME COLLECTION

1 BEDROOM
1 BATHROOM

INTERIOR 496 SF
TOTAL 496 SF



1 Efficient open-plan living is designed for versatility, seamlessly integrating the living, dining, and kitchen.

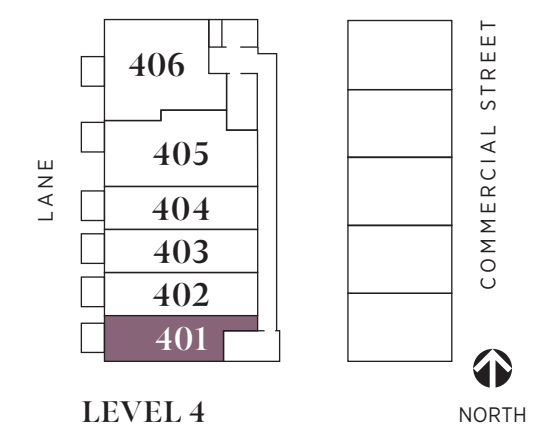
2 European Fulgor Milano appliances offer sleek kitchen aesthetics and culinary functionality.

3 Frosted glass sliders invite a perfect balance of privacy and natural light into the bedroom.

4 Spacious full-sized bathroom features soft-close cabinetry, under-cabinet lighting, medicine cabinet, and quartz countertops for both practicality and luxury.

5 Wide-format, engineered laminate flooring flows throughout, offering a stylish, durable, and waterproof surface.

6 The Juliette balcony welcomes fresh air and west-facing community views.

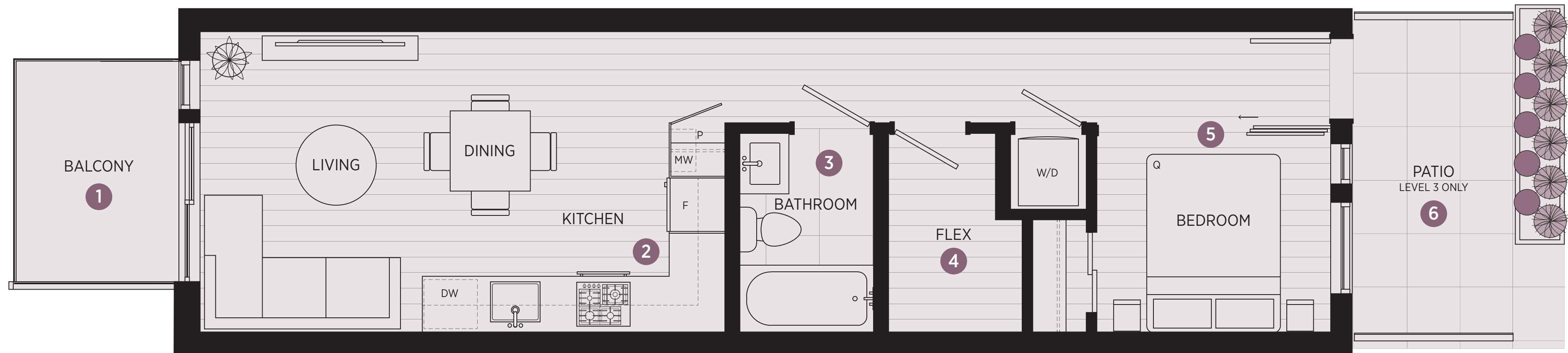


Plan B2

CITY HOME COLLECTION

1 BEDROOM + FLEX
1 BATHROOM

INTERIOR 530 SF
EXTERIOR 51 - 125 SF
TOTAL 581 - 655 SF



1 The balcony extends the living space outdoors, offering fresh air and quiet west-facing community views.

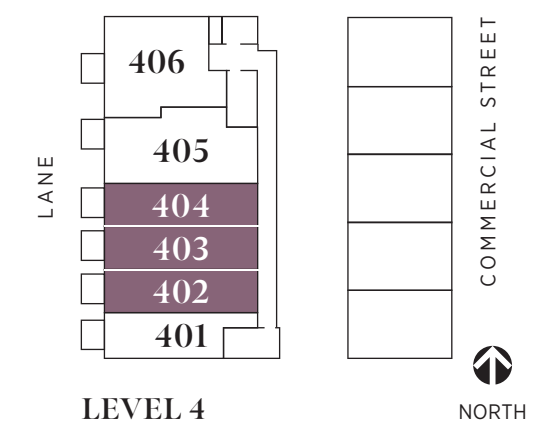
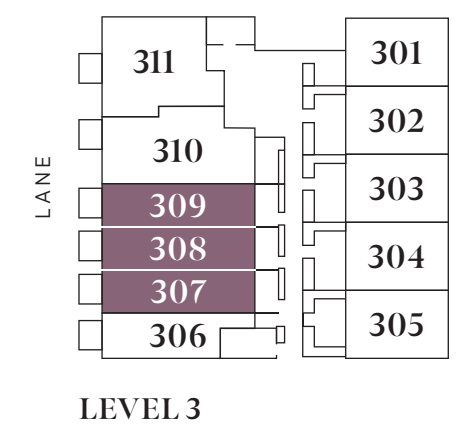
2 European Fulgor Milano appliances offer sleek kitchen aesthetics and culinary functionality.

3 Spacious full-sized bathroom features soft-close cabinetry, under-cabinet lighting, medicine cabinet, and quartz countertops for both practicality and luxury.

4 Versatile flex room maximizes functionality as a home office, creative studio, or extra storage.

5 Frosted glass sliders offer a perfect blend of privacy and natural light into the bedroom.

6 The private and spacious patio is exclusive to Level 3 homes, offering a step-out extension to the urban outdoors.





Plan C1 (L4)

CITY HOME COLLECTION

2 BEDROOM + FLEX
2 BATHROOM

INTERIOR	863 SF
EXTERIOR	51 SF
TOTAL	914 SF



1 The balcony extends the living space outdoors, offering fresh air and quiet west-facing community views.

2 This cleverly-designed hidden nook accommodates a desk, dresser, or other vertical storage solutions.

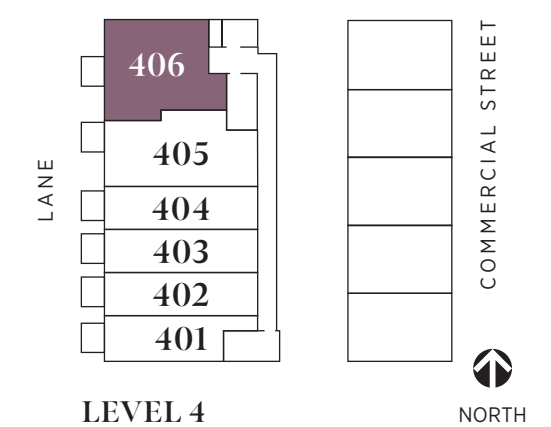
3 The walk-through closet features a double set of doors for added privacy, and also doubles as a private dressing area.

4 The generously-sized primary bedroom offers ample storage and convenient ensuite bath access which features, quartz countertops and backsplash, soft-close cabinetry, medicine cabinet, and under-cabinet lighting.

5 European Fulgor Milano appliances offer sleek kitchen aesthetics and culinary functionality.

6 Versatile flex room maximizes functionality as a home office, creative studio, or extra storage.

7 Full-sized, side-by-side Whirlpool washer and dryer adds everyday ease at home.



Plan C2

CITY HOME COLLECTION

2 BEDROOM + FLEX
2 BATHROOM

INTERIOR 841 SF
EXTERIOR 51 - 130 SF
TOTAL 892 - 971 SF



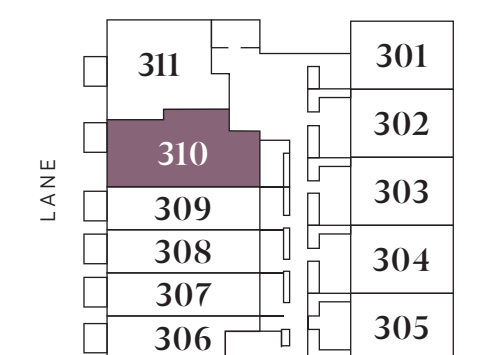
1 The balcony extends the living space outdoors, offering fresh air and quiet west-facing community views.

2 The generously-sized primary bedroom offers ample storage and convenient ensuite bath access which features, quartz countertops and backsplash, soft-close cabinetry, medicine cabinet, and under-cabinet lighting.

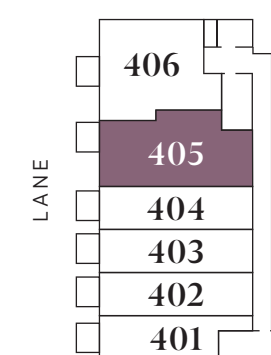
3 European Fulgor Milano appliances offer sleek kitchen aesthetics and culinary functionality.

4 Versatile flex room maximizes functionality as a home office, creative studio, or extra storage.

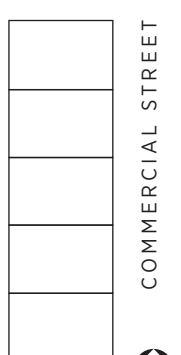
5 The private and spacious patio is exclusive to Level 3 homes, offering a second step-out extension to the urban outdoors.



LEVEL 3



LEVEL 4



NORTH

3



TOWNHOME COLLECTION

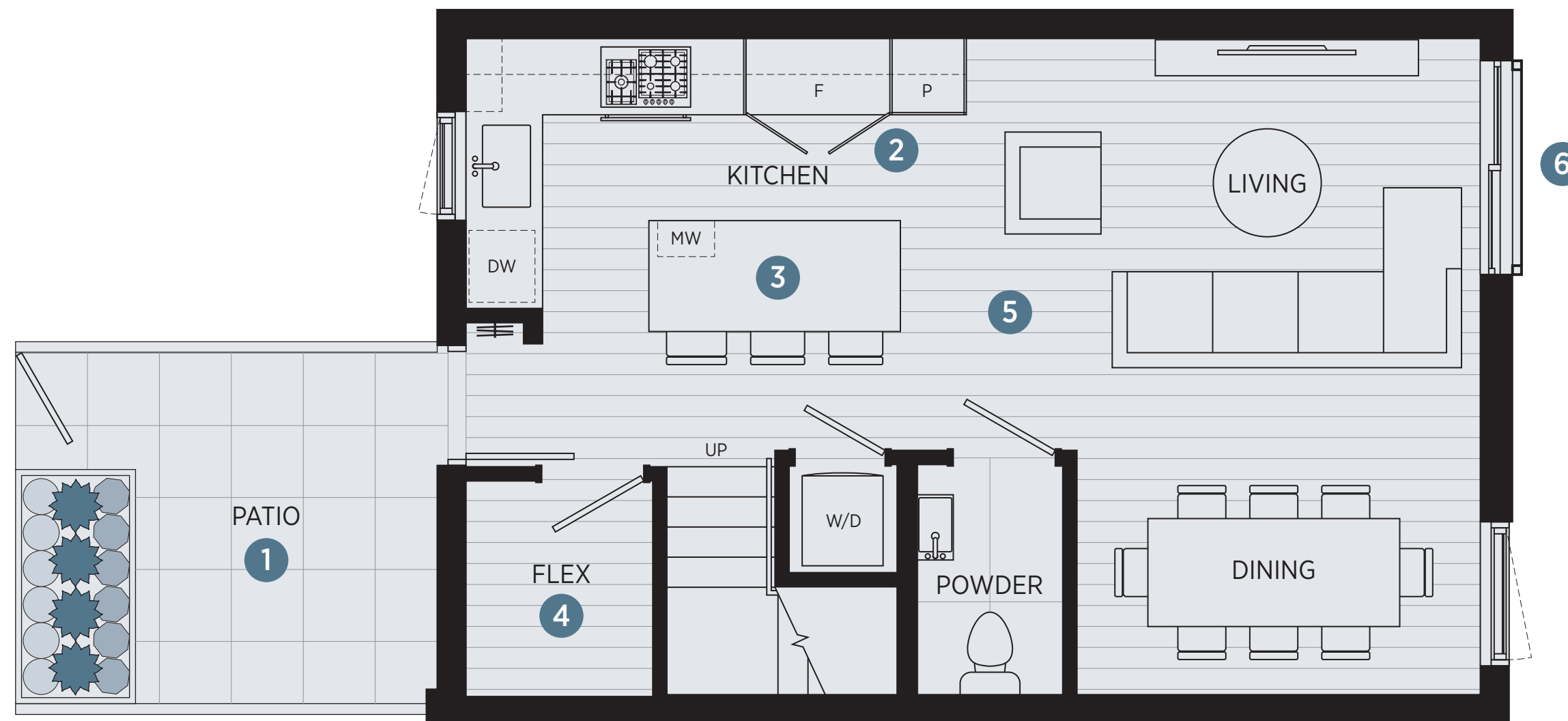


Plan THA

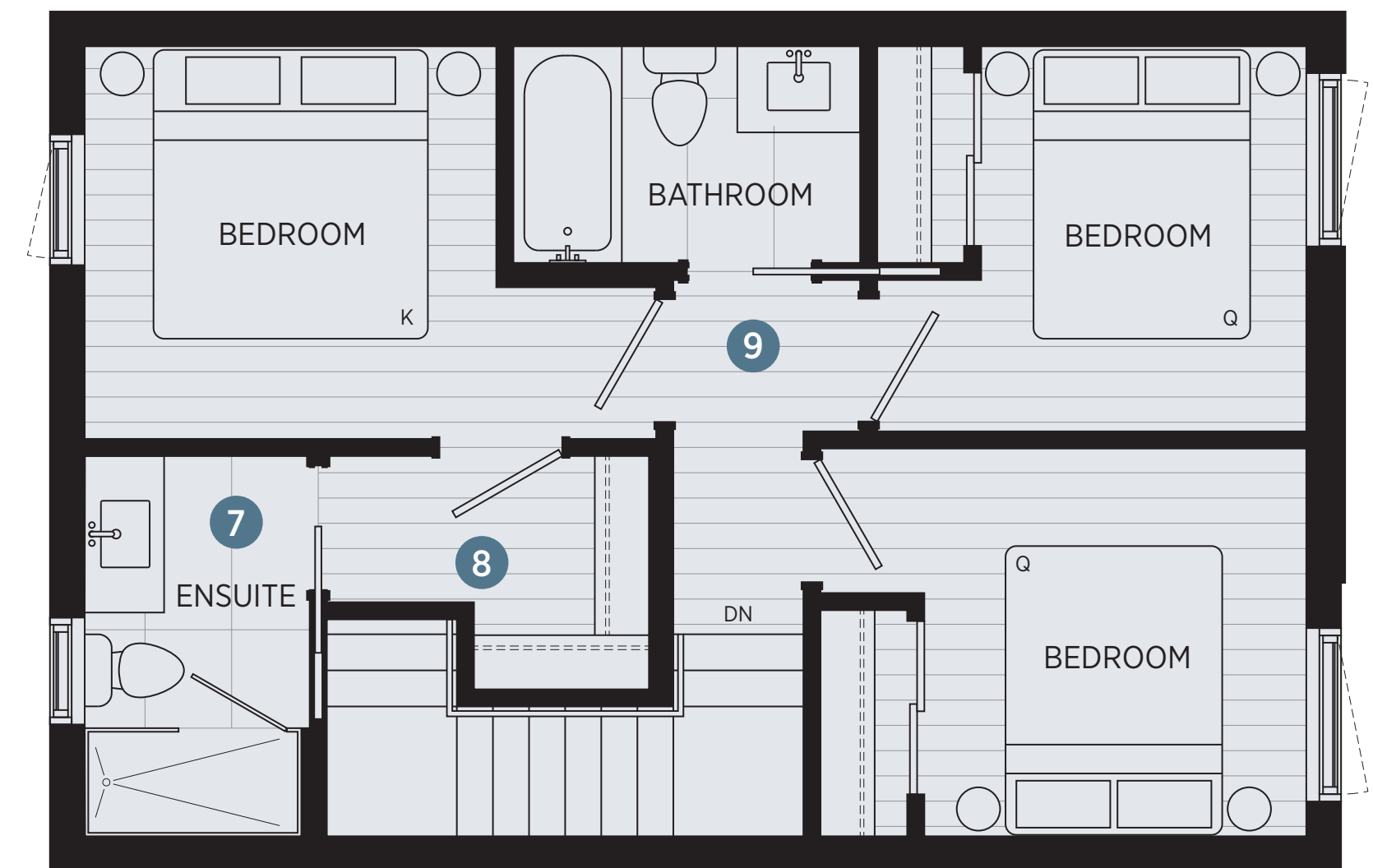
TOWNHOME COLLECTION

3 BEDROOM + FLEX
3 BATHROOM

INTERIOR	1,186 SF
EXTERIOR	83 SF
TOTAL	1,269 SF



Main Floor



Upper Floor

1 The private landscaped courtyard patio offers a substantial outdoor haven directly accessible from the main living area.

2 Double Fulgor Milano side-by-side refrigerator and full-height pantry provide generous kitchen storage with a sleek, integrated look unique to these townhomes.

3 A large kitchen island serves as both culinary workspace and social hub, complemented by an above-the-sink window flooding in natural light.

4 Versatile flex room maximizes functionality as a home office, creative studio, or extra storage.

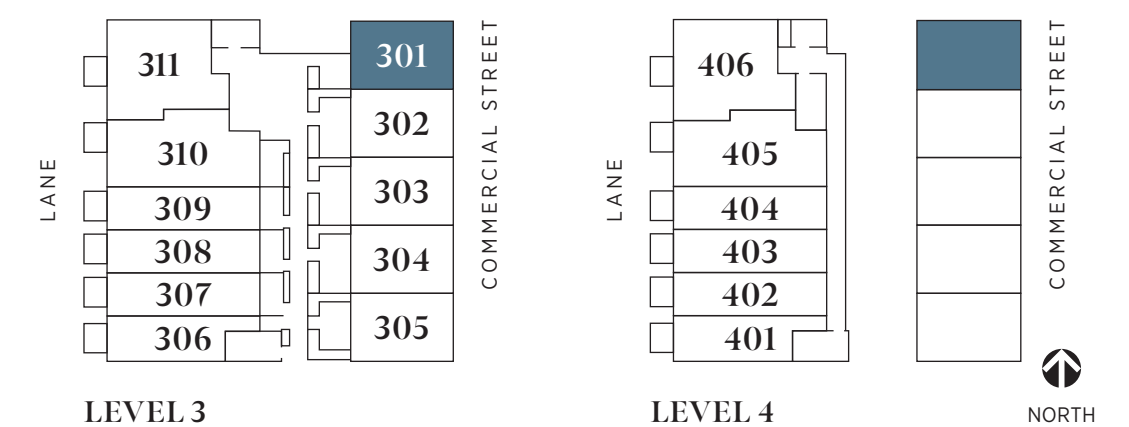
5 Wider floorplan amplifies spaciousness, fostering easy movement between living, dining, and kitchen spaces.

6 The Juliette balcony with full-height sliding door faces peaceful Commercial Street, welcoming an airy feel and a connection to the urban outdoors.

7 The large ensuite boasts a vanity with quartz countertops and backsplash, soft-close cabinetry, medicine cabinet and under-cabinet lighting.

8 The walk-in closet doubles as a dressing area, flowing into a windowed ensuite laid from floor to walls with large-format tiles.

9 3 spacious bedrooms with two full baths complete the upper level, ensuring ample privacy for all.



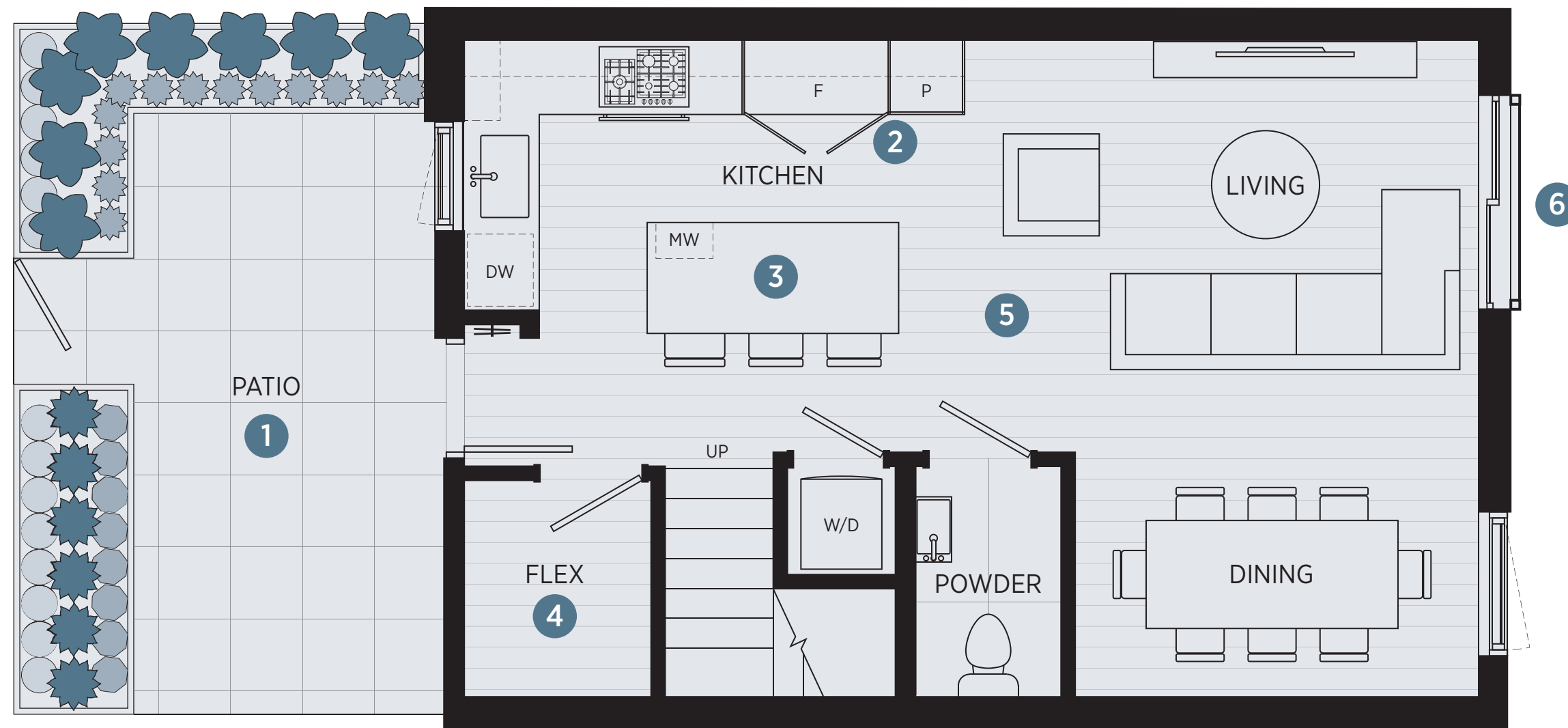


Plan THB

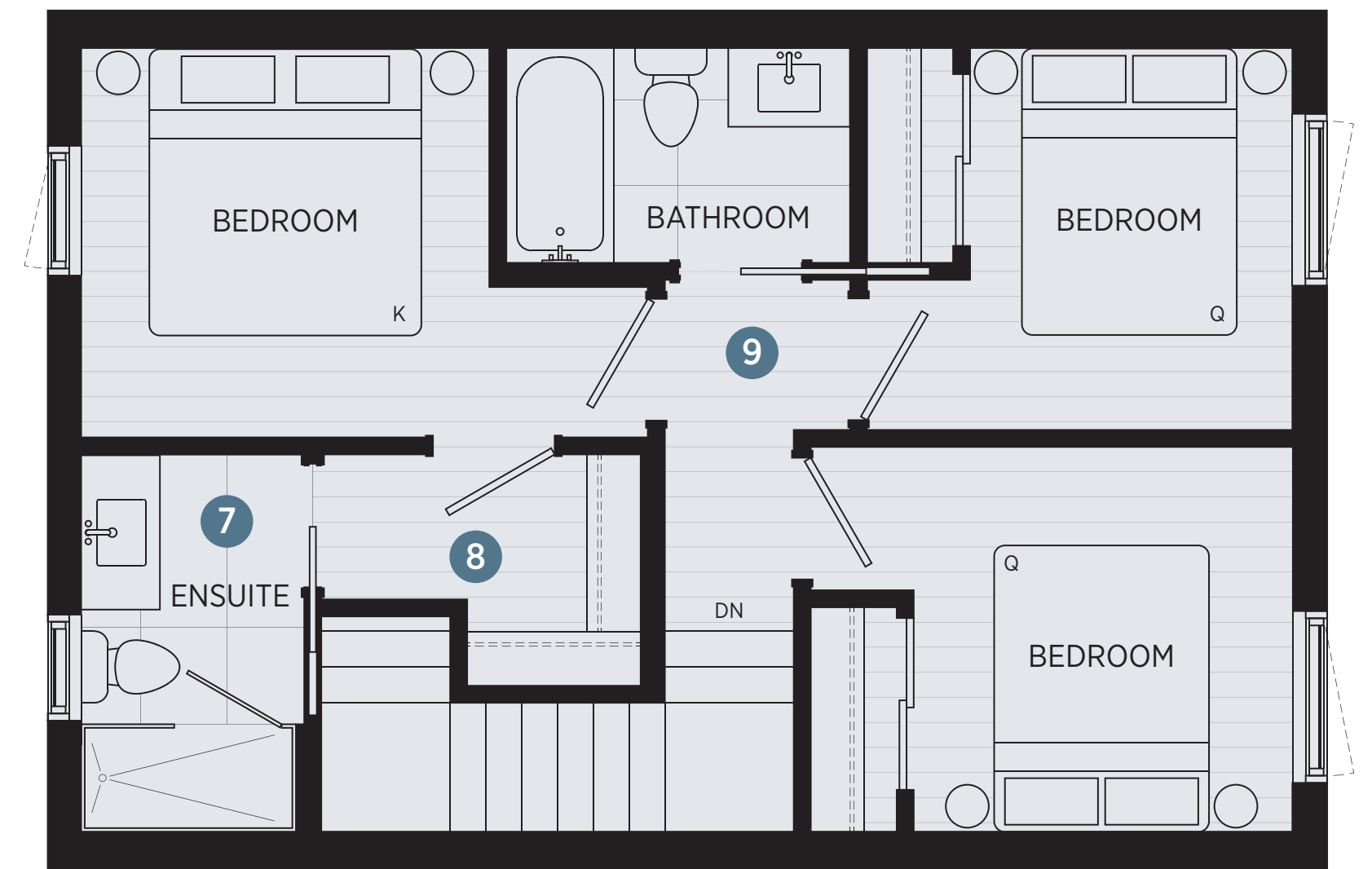
TOWNHOME COLLECTION

3 BEDROOM + FLEX
3 BATHROOM

INTERIOR 1,135 - 1,175 SF
EXTERIOR 113 - 141 SF
TOTAL 1,276 - 1,288 SF



Main Floor



Upper Floor

1 The private landscaped courtyard patio offers a substantial outdoor haven directly accessible from the main living area.

2 Double Fulgor Milano side-by-side refrigerator and full-height pantry provide generous kitchen storage with a sleek, integrated look unique to these townhomes.

3 A large kitchen island serves as both culinary workspace and social hub, complemented by an above-the-sink window flooding in natural light.

4 Versatile flex room maximizes functionality as a home office, creative studio, or extra storage.

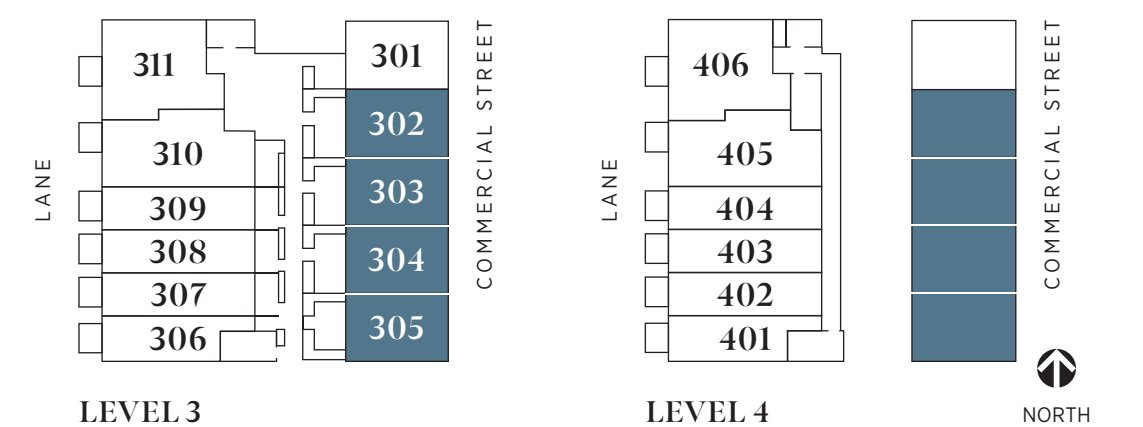
5 Wider floorplan amplifies spaciousness, fostering easy movement between living, dining, and kitchen spaces.

6 The Juliette balcony with full-height sliding door faces peaceful Commercial Street, welcoming an airy feel and a connection to the urban outdoors.

7 The large ensuite boasts a vanity with quartz countertops and backsplash, soft-close cabinetry, medicine cabinet and under-cabinet lighting.

8 The walk-in closet doubles as a dressing area, flowing into a windowed ensuite laid from floor to walls with large-format tiles.

9 3 spacious bedrooms with two full baths complete the upper level, ensuring ample privacy for all.



Features

In the heart of East Vancouver, Hendry stands as a contemporary testament amidst the storied streets of Commercial and Trout Lake. Inspired by the area's enduring spirit and wholesome values, Hendry weaves the fabric of local history with the threads of modern living.

- Developed and Constructed by Trillium Projects, a local award-winning Vancouver development and construction management company with neighbourhood roots, and over 20 years of experience building wood-frame multifamily, townhomes and custom homes.

- Hendry's bold envelope delivers sleek, modern design with a functional blend of residential and commercial spaces, showcasing clean lines, neutral tones, and a mix of complementary textures in a striking embodiment of contemporary urban architecture.

- Geometric art graces the over-height entry breezeway, drawing you through to an open-air courtyard that blends urban industrial vibes with natural light, creating a tranquil enclave.

- This artistic motif extends into the lobby, where double-height ceilings, linear pendant lights, and exposed concrete finishes embody industrial-modern minimalism.

- Directly outside your doorstep, a vibrant array of retail amenities and conveniences cultivates a community-rich atmosphere, fostering a genuine sense of belonging and engagement.

- All homes feature balconies or terraces designed as living outdoor spaces, extending the comfort of home outside.

- A multi-functional amenity space offering a kitchenette for hosting, a Great Room featuring a media centre and lounge for entertainment, an outdoor terrace for relaxation, and a work-friendly environment.

Design – Interiors

- Hendry is a celebration of practical and meticulous form infused with simple European aesthetic. Interiors offer a sanctuary of functionality and minimalist expression, blending Scandinavian aire with contemporary Italian design.

- Durable, waterproof wide-format engineered laminate flooring sweeps throughout all homes, adding a complementary warm visual touch.

- Versatile in-home flex rooms designed for convenient access to your belongings or a work-from-home office, found in most homes.

- Expansive windows create a sense of openness while providing residents with ample natural light and views of quiet streets below.

- Contemporary cordless roller blinds control privacy and ambiance.

- Cleverly designed spaces to maximize livability and utility.

Make – Kitchens

- Kitchens equipped with European-inspired flat-panel, soft-close cabinetry with hidden pulls and contrasting uppers and lowers in dark scheme.

- Abundant storage solutions, including full-height pantries offered in most homes.

- Under-cabinet LED strip lighting to better illuminate cooking surfaces.

- Durable solid quartz countertops carry through to large-profile porcelain backsplash.

- Undermount stainless steel single-bowl sink with dual spray pull-down Grohe faucet.

- Stylish and functional European appliance package throughout:

1 BEDROOMS HOMES

- Fulgor Milano gas wall oven and built-in 4-burner cooktop.

- Fulgor Milano integrated refrigerator with bottom-mount freezer.

- Sleek and fully concealed 300 CFM hood-fan with integrated LED lighting.

- Fulgor Milano integrated dishwasher with concealed controls.

- Panasonic 1200 Watt, Three Stage Microwave.

- Blomberg front-load washer and dryer located in all homes.

2 & 3 BEDROOM HOMES

- Fulgor Milano gas wall oven and built-in 5-burner cooktop.

- Fulgor Milano integrated full-sized refrigerator with bottom-mount freezer.

- Double (2x) Fulgor Milano integrated side-by-side refrigerators with a bottom-mounted freezer in all townhomes.

- Sleek and fully concealed 300 CFM hood-fan with integrated LED lighting.

- Fulgor Milano integrated dishwasher with concealed controls.

- Panasonic 1200 Watt, Three Stage Microwave.

- Whirlpool full-size, front-load, washer and dryer. Side-by-side configuration offered in select homes.

A RARE BLEND OF 5 TOWNHOMES, 6 LOFTS, & 12 CITY HOMES WHERE EUROPEAN MINIMALISM MOVES INTO HISTORIC EAST VAN

Clean – Bathrooms

- The aesthetically complementary wood-veneer finish cabinetry features soft-close hardware and under-mount cabinet lighting.

- For additional storage, all primary bathrooms to receive a mirrored medicine cabinet with millwork trim to match.

- Durable solid quartz countertops and backsplash surround the undermount sinks and brushed nickel, single-lever faucets.

- Subtle undermount cabinet lighting creates a hotel-like ambiance.

- Ensuite bathrooms feature sleek, full height, glass shower enclosures, and for increased visual interest, large format 24" x 48" floor and accent-wall tile complement the offsetting smaller format tile in both tone and texture, extending beyond the shower wall.

- Luxurious soaker tubs in main bathrooms and ceramic tile floor and bath surrounds.

- Modern high-efficiency, elongated bowl toilets throughout.

Peace Of Mind

- Two secured sets of residential lobby doors with intercom and key-fob security measures, and individual-floor secure fob access to parkade, residential floors, and bike storage.

- Secure bike storage room with designated bike parking stalls for all homes.

- Private storage rooms designated to select homes.

- Secure and double-gated parking garage with future EV integration capabilities.

- Hardwired smoke detectors and fully sprinklered, fire-protected building.

- All Trillium homes covered by a 12-month warranty on all defects in material and labour within a home and a 15-month warranty covering all defects in material and labour for building common areas.

- A dedicated Trillium Homeowner Care team available to handle all issues that may arise during the first 15-month occupancy period.

- 2-5-10 New Home Warranty provided by Travelers Guarantee Canada.

Hendry

3839 COMMERCIAL STREET



Hendry reflects the collective vision of a local, award-winning team, whose expertise in their respective fields is inspired by East Vancouver's vibrancy. European influences paired with Scandinavian calm result in Hendry's contemporary yet rich and warm aesthetic. These homes showcase the team's dedication to exceptional urban living and statement-making experiences designed with care.

Design-Forward Partnerships



TRILLIUM PROJECTS

Founded by a small team of real estate professionals, Trillium Project Management has been engaged in residential construction throughout British Columbia since 2005. With roots in building high-end, single-family homes, this award-winning firm expanded to apply their expertise to multi-family projects. Trillium's passion for residential development and construction translates into a dedication to providing the highest quality homes. With a foundation built on expertise, integrity, and results, Trillium prides itself on continually surpassing client expectations.



BROCK ON MAIN



SYDNEY TOWNHOMES



ELLA



ARCHITECTURE

Formosis Architecture, nestled in Gastown, is a boutique design firm with a selective clientele. Focused on place-making, their collaborative studio aims to forge environments that inspire engagement and connection. Their dedication to creating spaces of belonging ensures a lasting, positive impact within communities, embodying the essence of meaningful architecture.



Gauthier + Associates Landscape Architects Inc.

LANDSCAPE ARCHITECTURE

Gauthier and Associates, a Vancouver landscape architecture firm, specializes in blending large-scale and residential designs with natural elements, focusing on client and community needs. Their work ranges from urban planning to private gardens, emphasizing listening, integration, and innovative, context-sensitive solutions that enhance environmental harmony.



INTERIOR DESIGN

Portico Design provides full-service interior design, merging marketing insights with creativity to transform spaces. Specializing in commercial, residential, and resort projects, Portico ensures each design harmonizes with architectural and landscape elements, fostering collaboration for optimal results and creating dynamic, user-focused environments.

